

Bottom Problems in Dogs

Overview

- There are a few different conditions that can affect a dog's bottom.
- Most aren't urgent, but some (such as an anal prolapse), are an emergency.
- Contact your vet if your dog has a problem with their bottom

Symptoms

Symptoms of a bottom problem tend to include:

- [Scooting](#)
- Pain
- A bad odour or farting more than usual
- [Blood in poo](#) or around the anus
- Constipation or straining to poo
- Wounds or sores near the bottom
- Swelling around the anus
- Licking their back end (or vulva) more than usual

Causes

Some of the most common bottom problems in dogs include:

Worms

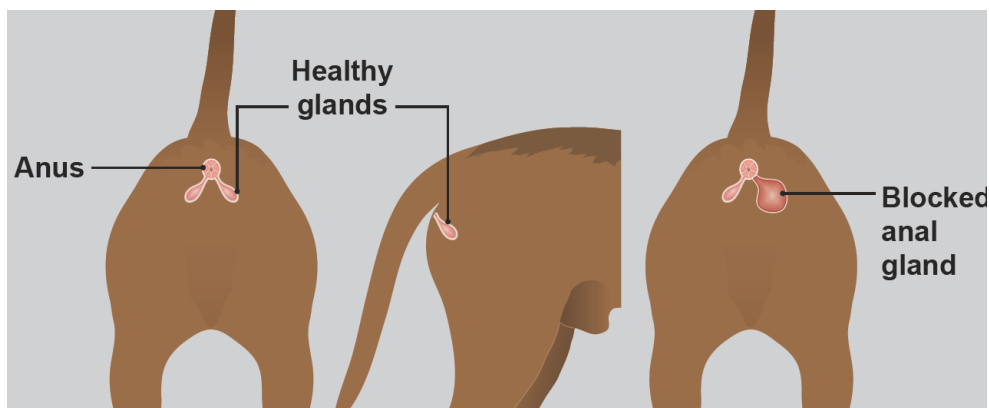


Worms often cause an itchy bottom and in severe cases, blood in the poo. It is unusual to see worms in poo until they have been killed with a worming product.

Anal gland problems

The anal glands are two small glands that sit just inside the bottom. Occasionally, they can block or develop into an abscess.

- **Blocked anal glands** often cause scooting and an itchy, irritated bottom.
- **Anal gland abscesses** are usually very painful and if they burst open, you may see sores, blood or pus around the anus.



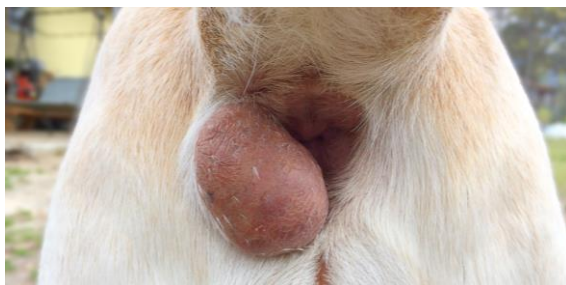
Prostate problems

The prostate gland sits inside the bottom of male dogs (female dogs don't have a prostate gland). Problems with the prostate tend to cause symptoms such as pain, straining to poo and peeing more frequently than usual.

Anal furunculosis

Anal furunculosis is an uncommon condition that mostly affects German Shepherd Dogs. It causes sores to develop around the bottom that tend to be very painful and bleed.

Tumours

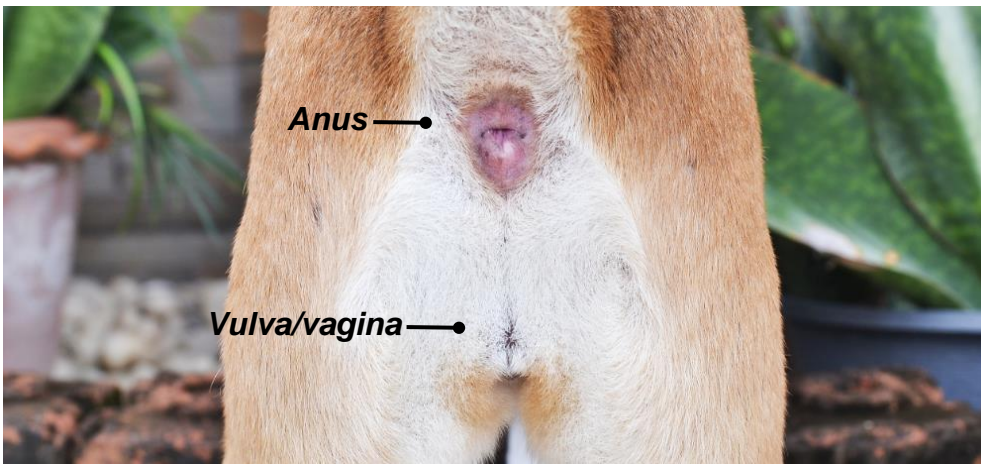


A lump around the bottom can be very irritating, lead to scooting, difficulty pooing and pain. It's important to get any new or changing lumps checked.

Rectal prolapse

A rectal prolapse is when part of the rectum (large intestine) comes out of the bottom. A rectal prolapse looks like a red tube under the tail and is most common if a dog has been straining very hard to poo. Rectal prolapses are an emergency but are fortunately, quite rare.

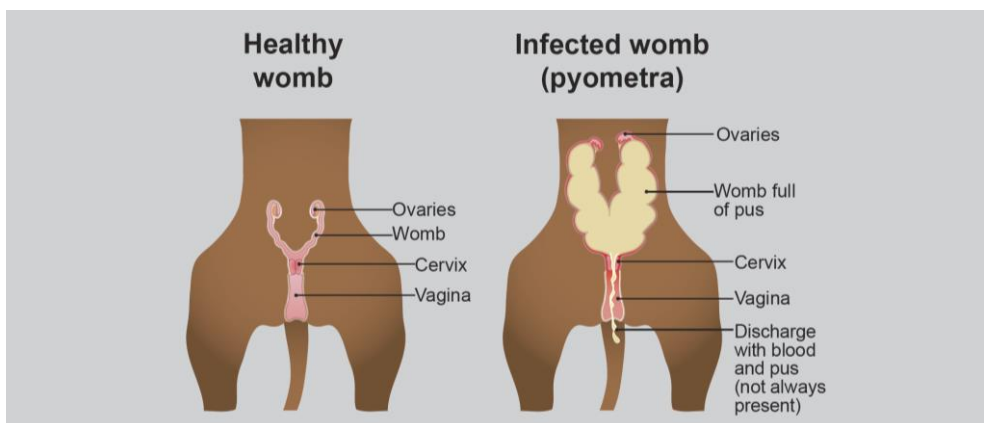
Vulva/vaginal problems



If you have a female dog, it's important to check whether the problem is around the anus (bottom), or the vulva (entrance to the vagina).

Some common problems around the vulva/vagina include:

- **Vaginal prolapse** - where the vagina comes out of the vulva. Vaginal prolapses are big, red, swollen and often appear very suddenly.
- **Pyometra** - an infection in the womb that can be fatal. If your dog has a pyometra, they might have a discharge from the vagina, increased thirst and start vomiting.



When to contact your vet

Contact your vet for an appointment if you think your dog has a problem with their bottom or back end. If you are having a telephone appointment, it may help to take a photograph of your dog's bottom to show your vet.

If you think your dog has a rectal or vaginal prolapse, or a pyometra, contact your vet for an emergency appointment.

Am I eligible for PDSA veterinary treatment?

Published: Sept 2020